

# SDL Trados Studio Integration Pre-configuration

Target audience: XTRF Platform's users

---

- XTRF Agent for SDL Trados Studio Configuration
- SDL Trados Studio Configuration
- XTRF Configuration
  - External System Configuration
  - Workflow Configuration
    - Workflow Graph Tab
    - External Systems Tab
      - Job Mapping
      - Project Creation
      - Machine Translation
      - Package Settings
    - Bundles Tab
  - Languages Configuration



SDL TRADOS

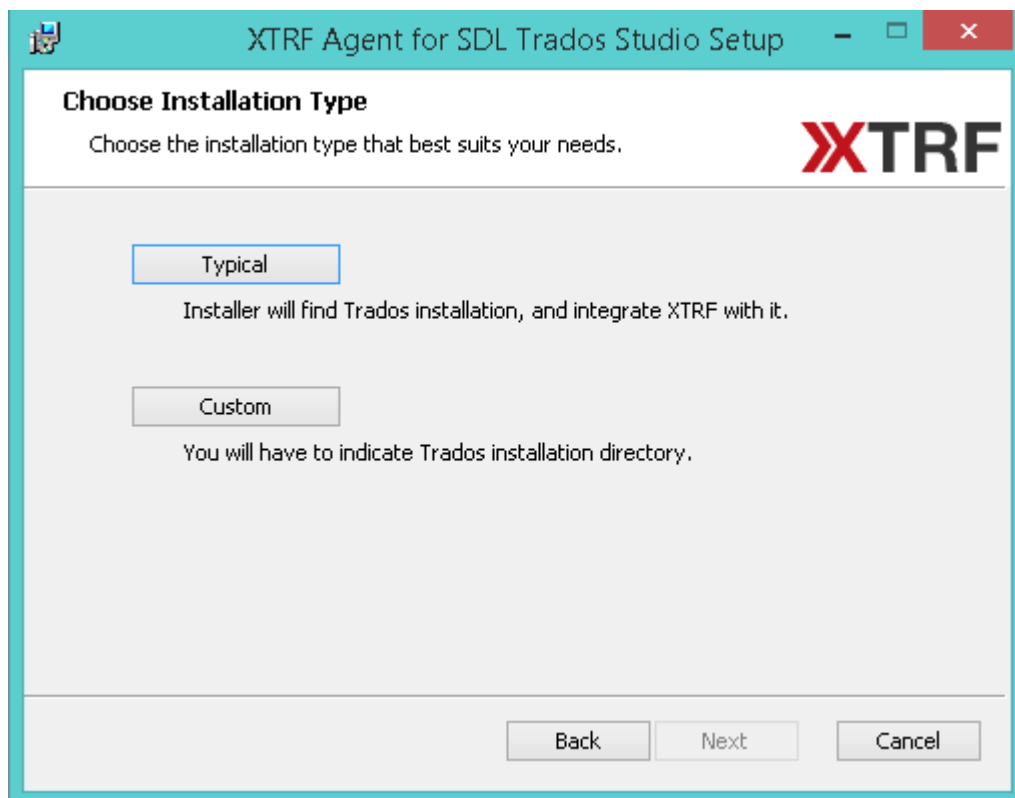


CAT TOOL

---

## XTRF Agent for SDL Trados Studio Configuration


1. Download the XTRF Agent for SDL Trados Studio provided by XTRF Management Systems. It is available here: [https://repo.xtrf.eu/soft/tools/xtrf\\_trados\\_agent/](https://repo.xtrf.eu/soft/tools/xtrf_trados_agent/)
2. Install the Agent on the computer where SDL Trados Studio is installed.



XTRF Agent for SDL Trados Studio Setup

### Trados version choice

Choose Trados version with you want integrate with XTRF.



There is more then one Trados Studio installation in your system. Choose which one you want to integrate with XTRF.

SDL Trados Studio 2011


SDL Trados Studio 2014

Back Next Cancel

XTRF Agent for SDL Trados Studio Setup

### Windows account

Enter your Windows Account details.



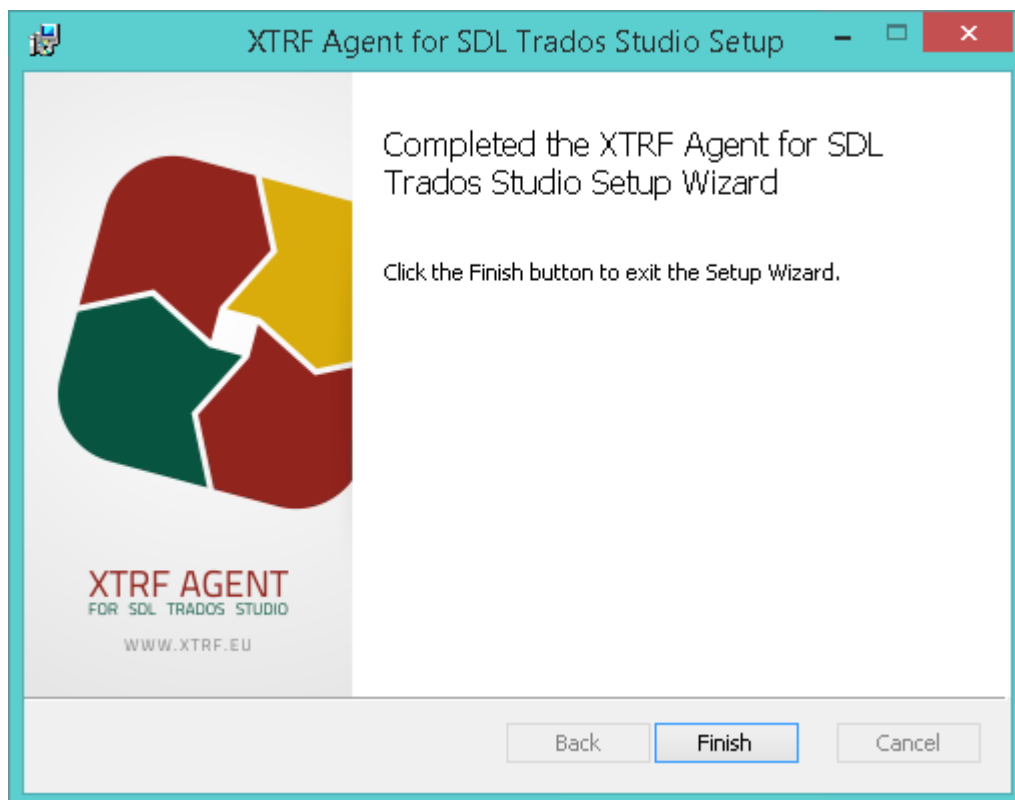
Specify the Windows account under which XTRF Agent for SDL Trados Studio service will run.

Username:

Password:

Enable account data validation.

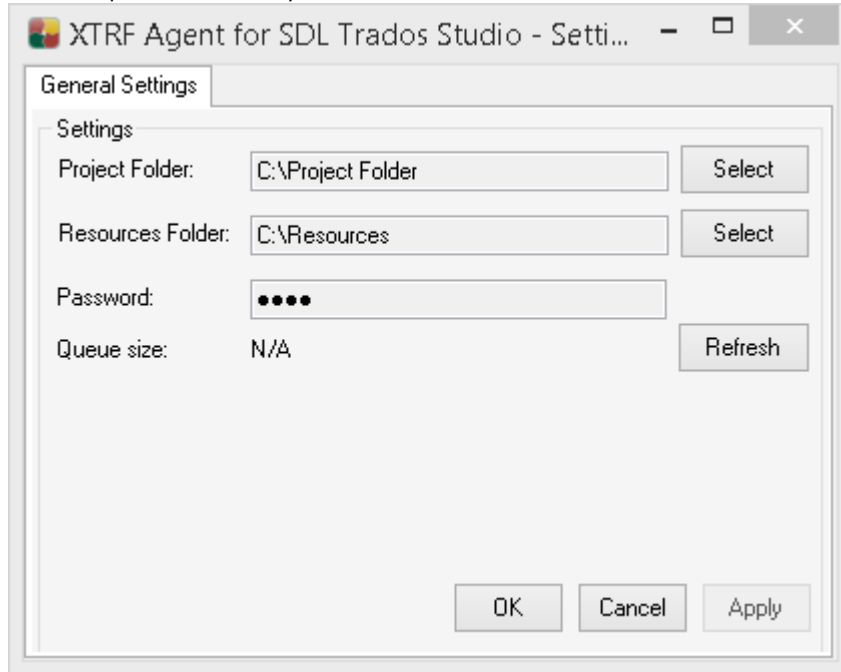
Back Next Cancel



The Agent will automatically run and its icon will appear on your system tray.

3. Right-click the icon and select Settings from the appearing menu to configure the Agent.
4. Select the location where SDL Trados Studio will store project files.
5. Select the location where Agent will store resources files (terminology files, translation memories etc.).

6. Enter the password which you will later need to enter in XTRF.



## SDL Trados Studio Configuration

No changes are required. However, it is necessary to run SDL Trados Studio at least once while being logged in as the user entered in the Agent configuration, before the integration can be used.

## XTRF Configuration

### External System Configuration

1. Click the Settings icon.
2. Expand the Integration section and click External Systems.
3. On the External Systems screen click Add to create a new entry.
4. Set the Type of the system to SDL Trados using the drop-down menu.
5. Set the name of the system and click the Save button to be re-directed to next step of configuration.
6. Provide the Webservice URL under which SDL Trados Studio is available.
7. Enter the Password which you earlier entered in the Agent configuration.
8. You can specify the way the project names in SDL Trados Studio will be generated by entering the Project Name Expression. The default expression is:  
`[${this.languageCombination.sourceLanguage.symbol}]-[${this.languageCombination.targetLanguage.symbol}]  
${this.idNumber} ${this.name}`  
which includes two-letter symbols (plus country code, if applicable) of the source and target languages, the XTRF task ID, and the XTRF task name, e.g.:  
`[EN_UK]-[DE] 2014/123 Translation of documents`
9. Click the Save button. Now the connection between SDL Trados and XTRF is established.

XTRF TRUNK1 Search...

### SDL Trados Studio 2014 - External System

Type	SDL Trados
Name	SDL Trados Studio 2014 *
Active	<input checked="" type="checkbox"/>
Webservice URL	http://trados.yourdomain.com *
Password	..... *
Project Name Expression	<code>{\${this.languageCombination.sourceLanguage.symbol}}-{{this.languageCombination.targetLanguage.symbol}} \${this.idNumber} \${this.name}</code> *

Save Save and Exit Cancel Exit Test

## Workflow Configuration

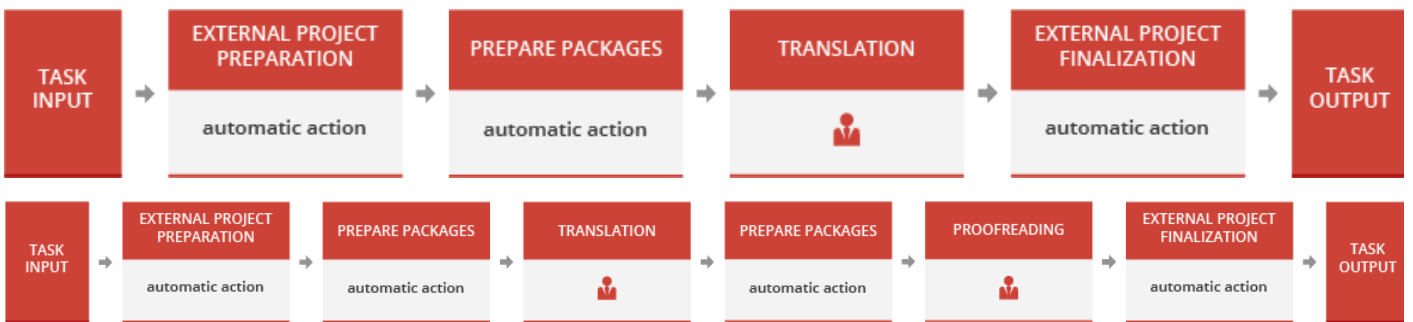
To automate the integration you should establish special workflows which will manage the communication between XTRF and SDL Trados. You can create as many workflows as you wish. To do that, go to Settings, expand the Workflows section, click Workflow Definitions and click Add to create a workflow.

## Workflow Graph Tab

Here you can configure the steps that will be included in the workflow. The workflow should contain the jobs listed below, in this order:

1. External Project Preparation (set the Default Provider as Automated Activity Action: External Project Preparation ).
2. Prepare Packages (set the Default Provider as Automated Activity Action: Prepare Packages ).
3. The proper jobs you wish to be performed in this workflow, e.g. Translation, Proofreading, etc. Note that between each pair of jobs the Prepare Packages job should be added.
4. External Project Finalisation (set the Default Provider as Automated Activity Action: External Project Finalisation ).

Examples:



For more information on the role of the Prepare Packages action, see: [Prepare Packages Action in SDL Trados Studio Integration](#).

To add new step click the plus icon.

XTRF TRUNK1 Search...

**[Trados 2014] Translation - Workflow Definition**

Main Data **Workflow Graph** Quote External Systems Bundles Files and Directories Time and Requests Notifications Receivables Resources

Quote jobs Project jobs

external pro... package pre... translation external pro...

Task Input Bundles files reference files Task Output

Automatic Action External Project Preparation Language combination-related

Automatic Action Prepare Packages Language combination-related

Language combination-related

Automatic Action External Project Finalisation Language combination-related

Click here to add a workflow job

Assignment of Bundles Transferred from Previous Job

Bundle	external project preparation	package preparation	translation	external project finalisation	Include in Task Output
files	Read/Write	Read/Write	Read/Write	Read/Write	Yes
reference files	Not Assigned	Not Assigned	Read Only	Not Assigned	No

Save Save and Exit Cancel Exit

## External Systems Tab

1. In the External System field select your SDL Trados Studio.
2. The project creation step in a workflow will automatically create a CAT receivable. However, it is also possible to create a CAT receivable using an external system manually. If you don't want your workflow to start automatically after receivable creation, untick the checkbox labeled Start Workflow after Completing CAT Receivable Using External System.

## Job Mapping

To ensure correct integration and information exchange you need to match the job in XTRF with corresponding workflow step in external system. Select from the list what kind of action should be performed by SDL Trados Studio.

There are two workflow steps available in SDL Trados Studio: translate, review.

Job mapping is necessary for the SDLPPX package to include correct settings.

For more information on SDL Trados Studio workflow steps please refer to SDL Trados Studio documentation ([SDL Trados Studio 2011](#) and [SDL Trados Studio 2014](#)).

XTRF TRUNK1 Search...

## [Trados 2014] Translation - Workflow Definition

Main Data Workflow Graph Quote **External Systems** Bundles Files and Directories Time and Reques

External System: SDL Trados Studio 2014

Start Workflow after Completing CAT Receivable Using External System

Download Preview Files after Each External Job

Job Mapping Project Creation Machine Translation Package for: translation

Please select which XTRF jobs will be executed in the external system:

translation ▶ Translate

Save Save and Exit Cancel Exit

### Project Creation

1. Select whether a CAT Receivable should be created during project creation.
2. Select whether CAT Payables for each job should be created during project creation.
3. You can configure several other option to decide how SDL Trados Studio should prepare the project.

XTRF TRUNK1 Search...

## [Trados 2014] Translation - Workflow Definition

Main Data Workflow Graph Quote External Systems Bundles Files and Directories Time and Requests Notifications Receivables

External System: SDL Trados Studio 2014

Start Workflow after Completing CAT Receivable Using External System

Download Preview Files after Each External Job

Job Mapping **Project Creation** Machine Translation Package for: translation

Create CAT Receivable

Create CAT Payable

Task sequence

Available Items		Selected Items
Pseudo-translate	Add All Add Remove Remove All	Analyse Files
Word Count		Apply PerfectMatch
		Convert to Translatable Format
		Copy to Target Languages
		Populate Project Translation Memories
		Pre-translate Files
		Translation Count

Analyse Files Settings

Analyse Files Settings

Report cross-file repetitions

Report internal fuzzy match leverage





CRM



Reports

### Frequent Segments

Export frequent segments	<input type="checkbox"/>
Number of occurrences	5

### Unknown Segments

Export unknown segments	<input type="checkbox"/>
Maximum match value	75

### Project Translation Memories

Create file-based translation memories	<input checked="" type="radio"/>
Create server-based translation memories	<input type="radio"/>
Server URI	
Location	
Container	

### Pre-translate Files

#### Pre-translate Settings

Minimum match value	100
Translation overwrite mode	Overwrite existing translation if better match is found

#### After Applying Translations

Confirm 100% matches	<input checked="" type="checkbox"/>
Confirm context matches	<input checked="" type="checkbox"/>
Lock context matches	<input checked="" type="checkbox"/>

#### When no match found

Copy source to target	<input type="radio"/>
Apply automated translation	<input type="radio"/>
Leave target segment empty	<input checked="" type="radio"/>

### Translation Memory Updates

#### Translation Memory Updates

	Specify which segments should be updated to the translation memories and whether to add segments as new translations
Draft	<input type="checkbox"/>
Translated	<input checked="" type="checkbox"/>
Translation Approved	<input checked="" type="checkbox"/>
Signed Off	<input checked="" type="checkbox"/>
Not Translated	<input type="checkbox"/>
Translation Rejected	<input type="checkbox"/>
Sign-off Rejected	<input type="checkbox"/>

### Export Files

#### Export Files

File version to export	Target version
------------------------	----------------

## Machine Translation

Here you can select if an MT engine should be used. You can select one of three available engines.

The screenshot shows the 'External Systems' configuration window in SDL Trados Studio 2014. The window title is '[Trados 2014] Translation - Workflow Definition'. The 'External Systems' tab is active, showing a dropdown menu for 'External System' set to 'SDL Trados Studio 2014'. Below this, there are two checked checkboxes: 'Start Workflow after Completing CAT Receivable Using External System' and 'Download Preview Files after Each External Job'. The 'Machine Translation' sub-tab is also active, showing a 'Machine Translation Option' section with four radio buttons: 'Do not use' (selected), 'SDL BeGlobal Community', 'SDL Automated Translation', and 'Google Translate'. At the bottom, there are four buttons: 'Save', 'Save and Exit', 'Cancel', and 'Exit'.

Main Data	Workflow Graph	Quote	External Systems	Bundles	Files and Directories	Time and Reque
External System						SDL Trados Studio 2014
Start Workflow after Completing CAT Receivable Using External System						<input checked="" type="checkbox"/>
Download Preview Files after Each External Job						<input checked="" type="checkbox"/>

Job Mapping	Project Creation	Machine Translation	Package for: translation
Machine Translation Option			
Do not use <input checked="" type="radio"/>			
SDL BeGlobal Community <input type="radio"/>			
SDL Automated Translation <input type="radio"/>			
Google Translate <input type="radio"/>			

Save Save and Exit Cancel Exit

For more information about the options available here please refer to SDL Trados Studio documentation (SDL Trados Studio 2011 and SDL Trados Studio 2014).

## Package Settings

There will be a Package tab for each external job. You can configure how SDL Trados Studio prepares the SDLPPX packages for your vendors.

XTRF TRUNK1 Search...

**[Trados 2014] Translation - Workflow Definition**

Main Data | Workflow Graph | Quote | **External Systems** | Bundles | Files and Directories | Time and Reque

External System: SDL Trados Studio 2014

Start Workflow after Completing CAT Receivable Using External System

Download Preview Files after Each External Job

Job Mapping | Project Creation | Machine Translation | **Package for: translation**

**Project Translation Memory**

Create a new file-based project translation memory for every package

Include the existing project translation memory in every package

Do not include any project translation memories

**Automated Translation**

Remove automated translation provider information from the project packages.

**Statistics**

Recompute word count and analysis statistics in order to update cross-file repetition counts.

**File-based Resources**

Include the following file-based resources in the project packages:

Main translation memories

AutoSuggest dictionaries

Termbases

Save Save and Exit Cancel Exit

For more information about the options available here please refer to SDL Trados Studio documentation (SDL Trados Studio 2011 and SDL Trados Studio 2014).

## Bundles Tab

Create as many bundles as you require here.

Assignment of bundles to particular jobs can be configured in the Workflow Graph tab.

To make reference files available for the providers, place them in a separate bundle, and do NOT assign that bundle to the Project Creation, Package Preparation and Project Finalization actions. The bundle should only be assigned (as read-only) to the jobs performed by the providers.

XTRF TRUNK1 Search... Create ? ? ? ? ?

**[Trados 2014] Translation - Workflow Definition**

Main Data Workflow Graph Quote External Systems Bundles Files and Directories Time and Requests Notifications Receivables Resources

Bundle + Add 2 items Refresh View: default

Name	Include in Task Output	Up	Down	Edit	Delete
files	Yes		▼		
reference files	No	▲			

Save Save and Exit Cancel Exit

## Languages Configuration

SDL Trados Studio doesn't allow for languages without country codes to be used. If you wish to use such languages in XTRF, you need to change the two-letter ISO codes for such languages to include the country code. To do that, go to Settings, expand the System Values section, click Languages and edit the languages you need to configure.

XTRF TRUNK1 Search...

**English - Language**

Name	English	* <a href="#">Show Localised Names</a>
Symbol	EN	*
ISO 639-1 Code (two letters)	en	*
ISO 639-2 Code (three letters)	eng	*
Active	<input checked="" type="checkbox"/>	
Preferred Item	<input checked="" type="checkbox"/>	
Default	<input checked="" type="checkbox"/>	

Save Save and Exit Cancel Exit